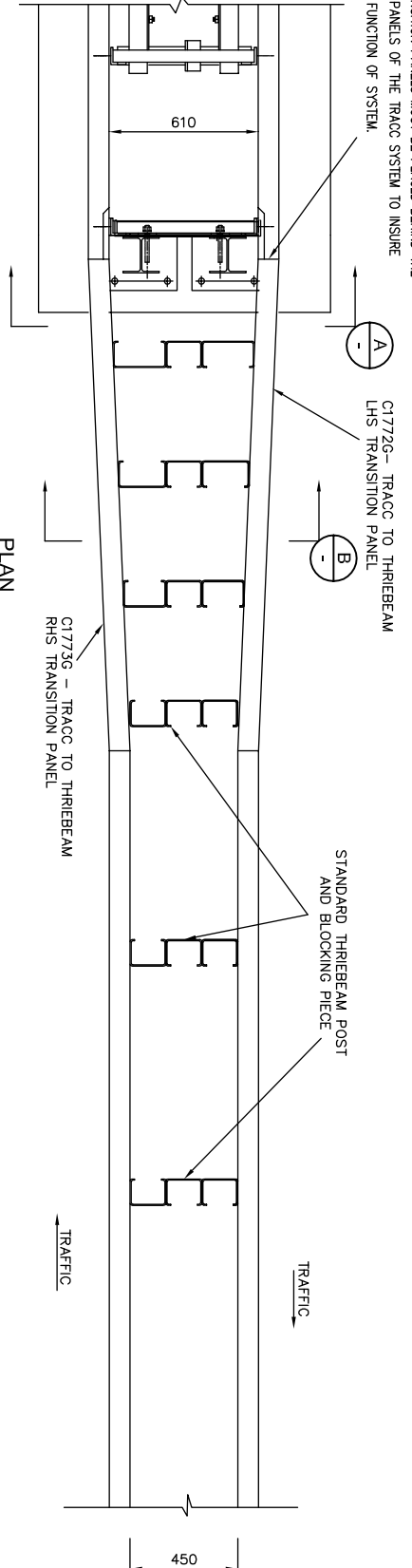
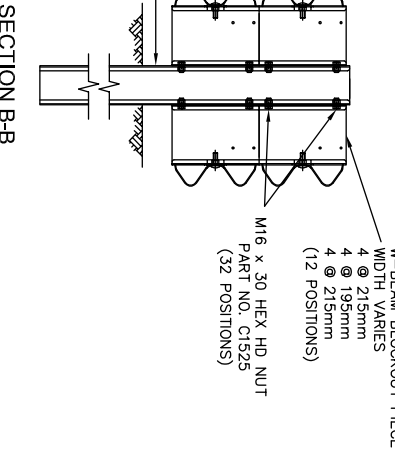
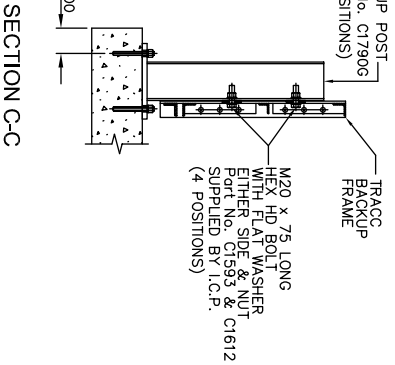
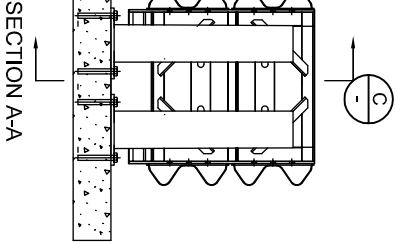
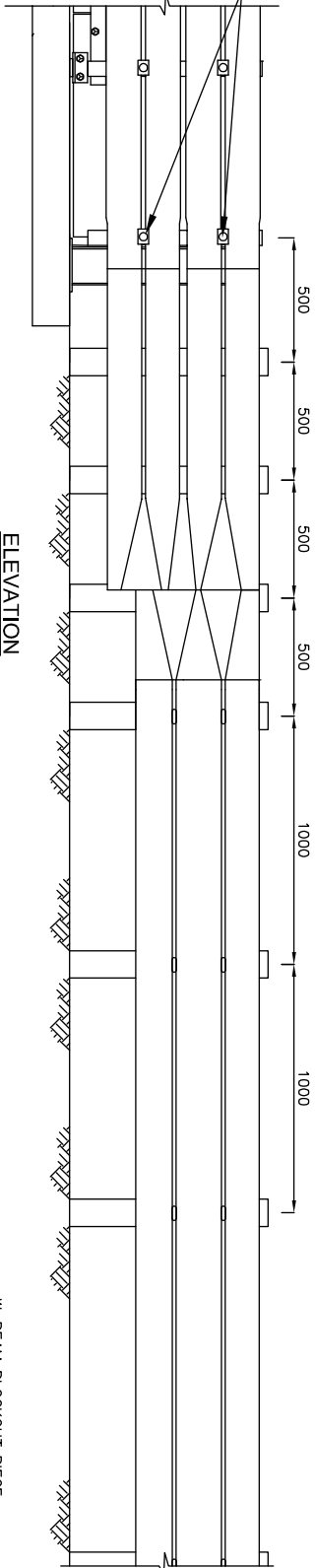


TO INSTALL TRANSITION PANELS  
 THE TRANSITION PANELS MUST BE PLACED BEHIND THE  
 FENDER PANELS OF THE TRACC SYSTEM TO INSURE  
 PROPER FUNCTION OF SYSTEM



REMOVE M16 x 50 SPLICE BOLT  
 SUPPLIED WITH TRACC UNIT & INSTALL  
 M16 x 65 CONNECTING BOLT  
 (2 POSITIONS THIS SIDE &  
 2 POSITIONS OPPOSITE SIDE)



Rev	INITIAL ISSUE	Description	M.S.	Date
0				

**INGAL CIVIL PRODUCTS**

17-25, Aitola Road, Lillooie, BC V3W 2S6, Canada  
 Telephone 61-2-9827 2333, Facsimile 61-2-9827 2500, Internet www.ingalcivil.com.au  
 © Industrial Development Corporation Pty Ltd. A.C.N. 000 545 415 (2005)  
 This drawing is the subject of Copyright. No part of it may be used, reproduced  
 or copied in any manner or in any form without the prior permission of the owner.

PROJECT	TRACC TRANSITION TO THREBEAM ASSEMBLY
TITLE	GENERAL ARRANGEMENT

DATE	03/08/09	INGAL CIVIL PRODUCTS
DRAWN	MS	REFERENCE No.
DESIGNED/ICP		
CHECKED T.C.		
MATERIALS SHOWN		
FINISH AS SHOWN		
SCALE	N.T.S.	
		DRAWING No. CAB-STD-091
		REV.0